



Figure 1 – Société Crazy Dog, vers 1913 (APA, P105)



Figure 2 – Société Brave Dog. Debout, cinquième à gauche, est Raw Eater; vers 1910 (APA, P176)

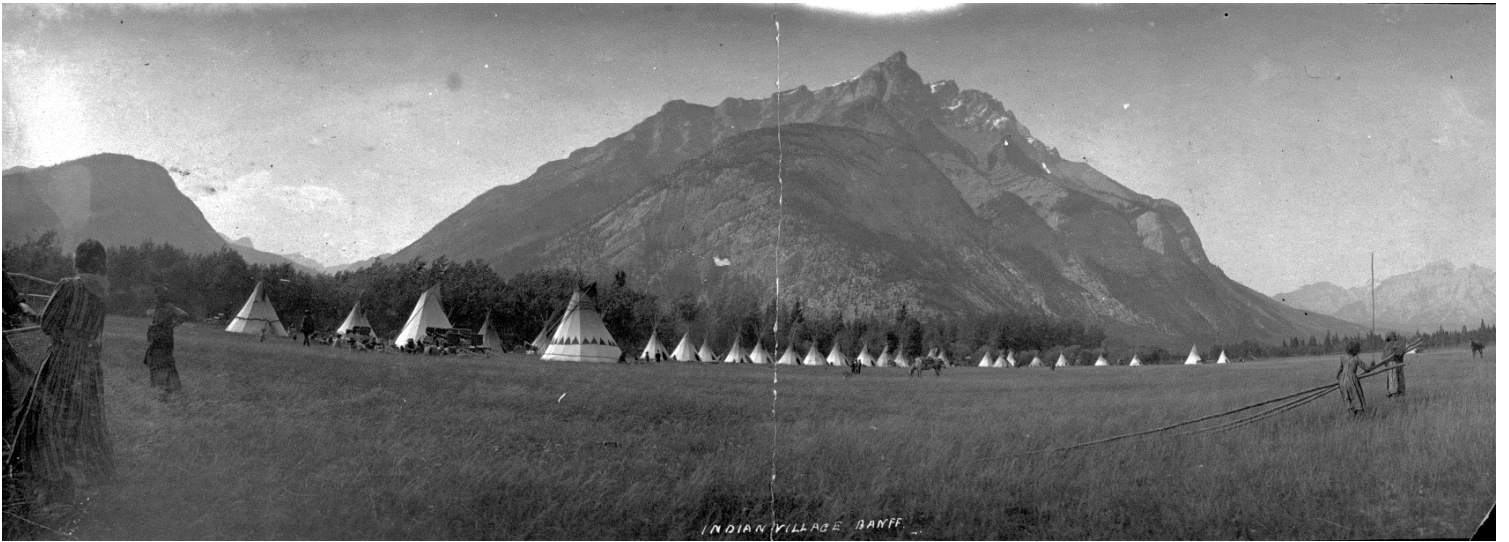


Figure 3 – Village de Premières nations près de Banff, Alberta, vers 1920 (APA, A6860)

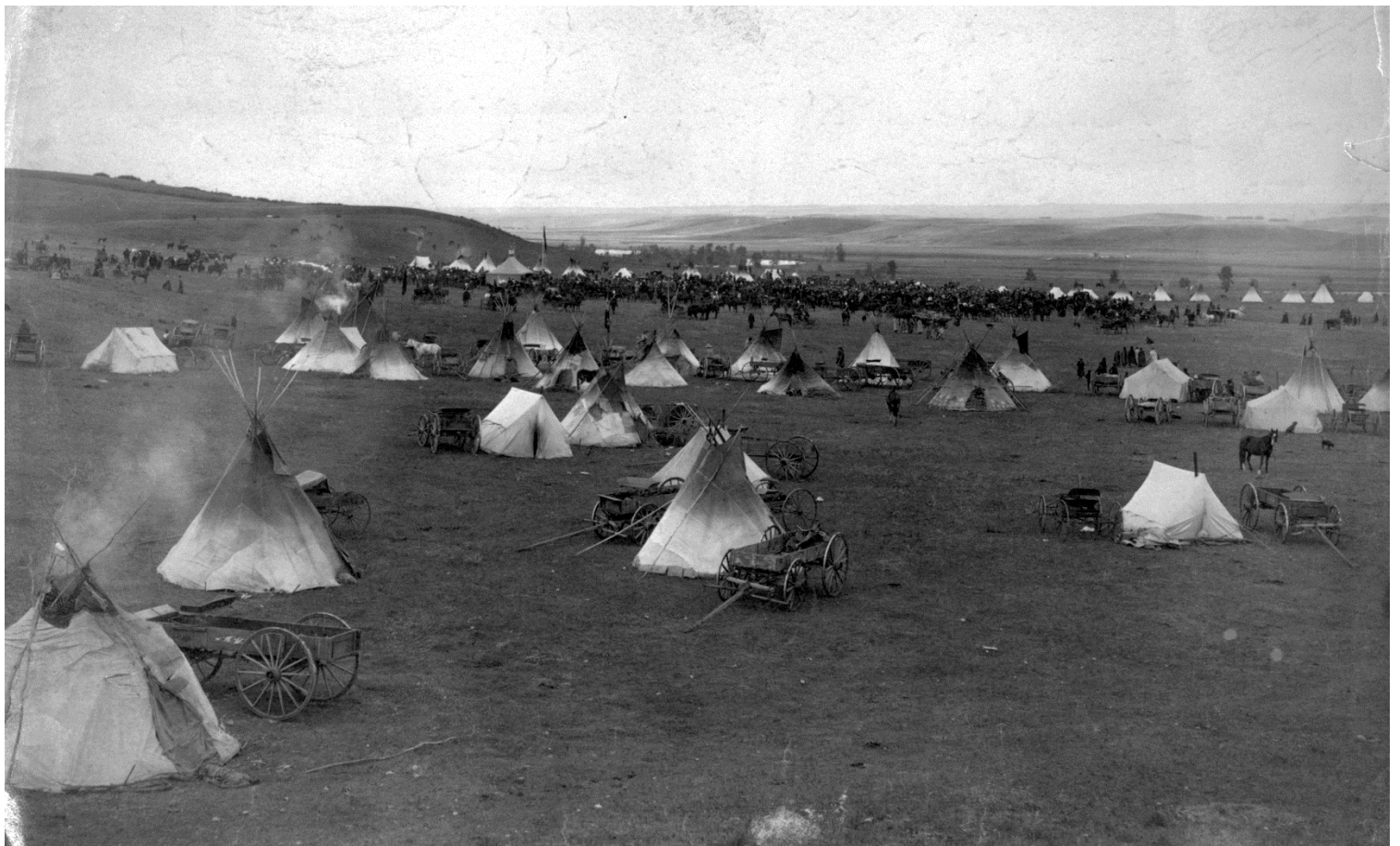


Figure 4 – Camp de Pieds noirs, Shagnappie Point, Calgary, 1905 (APA, A3247)

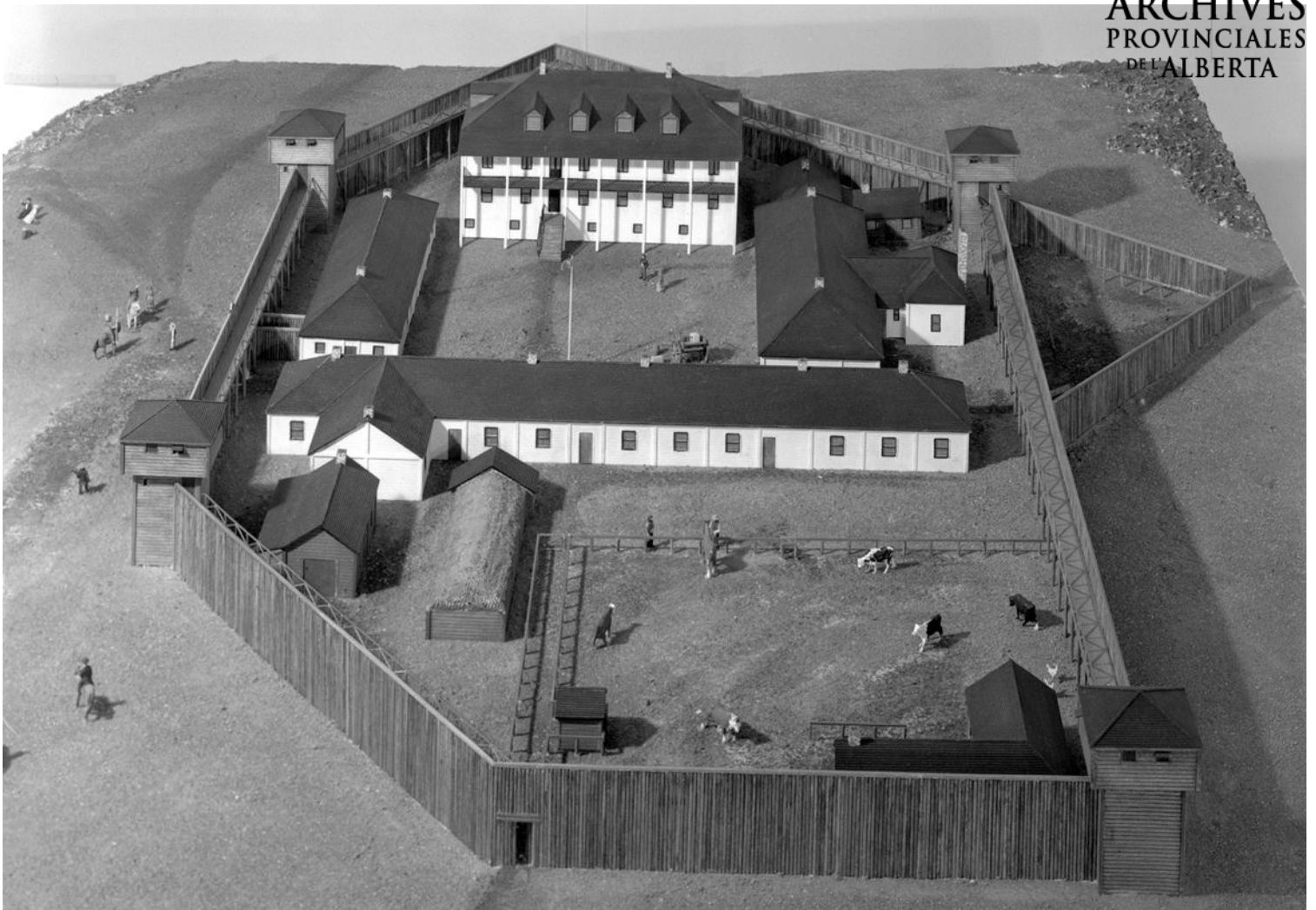


Figure 5 – Modèle architectural du Fort Edmonton, 1970 (APA, A1010)